

- Wire Rack : 900 x 900 x 230mm.
Total Linear Display - 900mm
Dimension of Display Frontage (LxH) - 0.831m²
- Beer / Spirits Shelving
Total Linear Display - 2.850m
Dimension of Display Frontage (LxH) - 1.281m²

3. **Off sales area :-**
900 mm long, 2,100 mm high,
4,50 mm deep.
Total linear display - 900 mm.
Dimension of display
frontage - 1.89 m²

- Legend:**
- Water Extinguisher
 - Emergency Lighting
 - Fire Alarm Sounder
 - Fire Blanket
 - Fire Exit Sign
 - Chemical Extinguisher
 - Break Glass - Fire Alarm - Call Point

GENERAL NOTES:

Fire Warning System to comply with British Standard BS5829:Part 1: 2002.

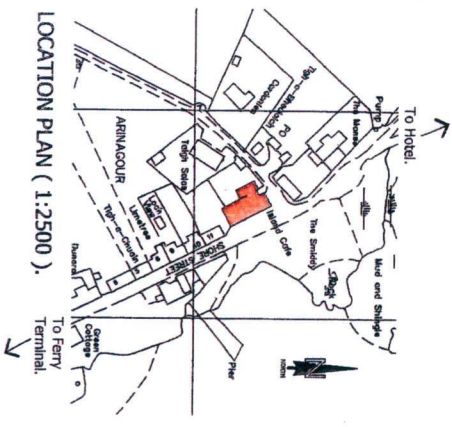
Emergency Lighting System to comply with British Standard BS5832:Part 1:1999 (BS EN 1838:1999) and BS EN 1838:1999 (BS EN 1838:1999).

Fire Fighting Equipment to comply with British Standard BS5832:Part 1:1999 (BS EN 1838:1999) and British Standard BS5832:Part 1:1999.

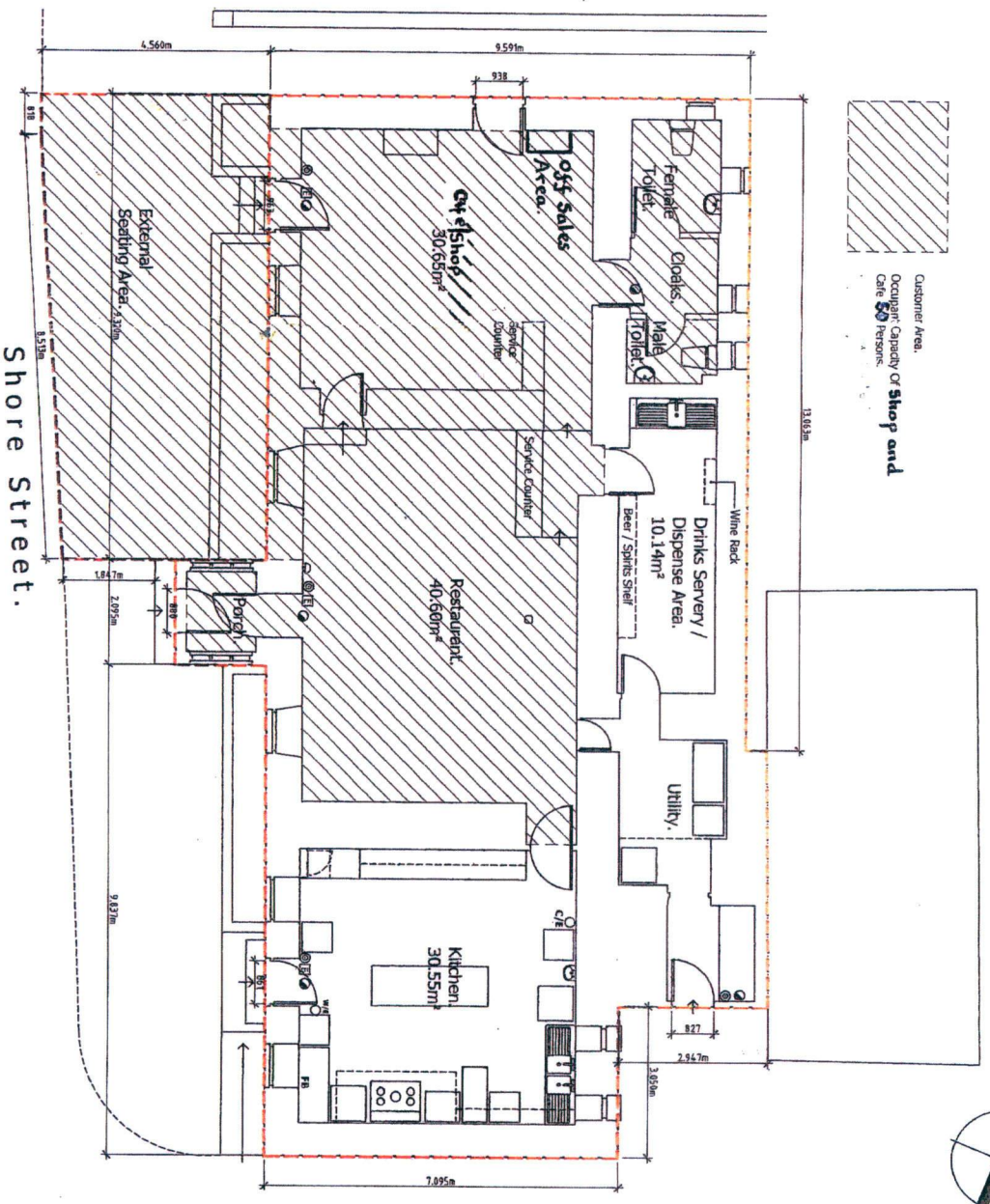
Signs and notices to comply with the Health and Safety (Safety Signs and Signals) Regulations 1996 and / or British Standard BS5375:Part 1:1996.

This is the layout plan relative to the premises licence for First Port of Coll, Main Street, Arinagour, Isle of Coll granted by Argyll & Bute Licensing Board on 24th June 2014.

W. Ball
W. Ball
 Clerk to the Board



FLOOR PLAN (1:100).



Three amendments made by hand on 14th June 2013 by Julian Senior for Mco. P. White.

CP:319.
 SCALE as shown

DRG NO. S-01.
 DATE April '08.

PROJECT TITLE Island Cafe, Shore Street, Arinagour, Isle Of Coll, Argyll.

CLIENT Mrs P White.
 DRAWING TITLE Licensing Plan.

CP architects
 Chartered Architects and Planning Supervisors
 110 George Street, Oban, Argyll, PA24 5NF
 T. 01653 563 177, 01653 563 234
 e-mail: mail@cparchitects.net website: www.cparchitects.net